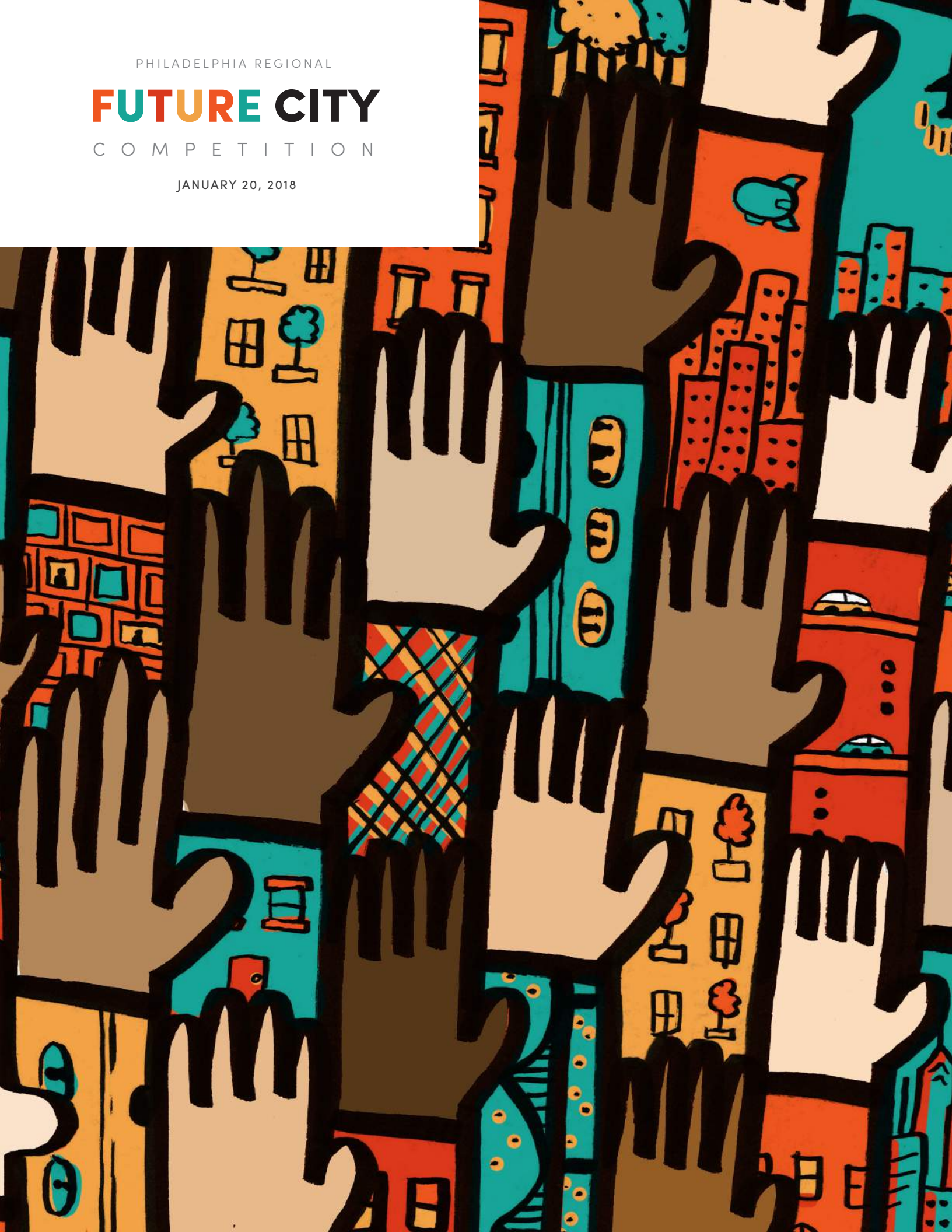


PHILADELPHIA REGIONAL

# FUTURE CITY

COMPETITION

JANUARY 20, 2018



# THANKS TO ALL OF OUR SPONSORS

## **Platinum Sponsors**

*Bentley Systems, Inc.*

## **Gold Sponsors**

*Pennoni Associates, Inc.*

*Urban Engineers, Inc.*

## **Silver Sponsors**

*AECOM*

*BR+A Consulting Engineers*

*CVM Professional*

*Delaware Valley Regional Planning Commission*

*Hunter Roberts Construction Group, LLC*

*International Society of Pharmaceutical Engineers, Delaware Valley Chapter*

*Jacobs*

*Keast & Hood Structural Engineers*

*Langan Engineering & Environmental Services*

*Skanska USA Inc*

*Society of American Military Engineers, Philadelphia Post*

*The Kirkman Oliver Company*

*Trefz Engineering*

## **Bronze Sponsors**

*American Society of Heating, Refrigerating and Air Conditioning Engineers, Philadelphia Chapter*

*American Society of Mechanical Engineers, Philadelphia Section*

*American Society of Plumbing Engineers, Philadelphia Chapter*

*Arora Engineers, Inc.*

*Associated Engineering Consultants, Inc.*

*Association of Energy Engineers, Greater Philadelphia Chapter*

*Ballinger*

*Boles, Smyth Associates, Inc.*

*International Society of Automation, Philadelphia Section*

*James J. Anderson Construction Co., Inc.*

*Johnson Controls, Inc.*

*L.F. Driscoll Company, LLC*

*National Fire Sprinkler Association, PennJerDel Chapter*

*Target Building Construction*

## **Sponsors**

*American Planning Association, PA Chapter, Southeast Section*

*American Society of Civil Engineers, Phila Section, Young Members Forum*

*American Society of Highway Engineers, Delaware Valley Section*

*American Society of Highway Engineers, Southern New Jersey Section*

*Canuso Jorden*

*Institute of Electrical and Electronic Engineers, Philadelphia Section*

*Institute of Industrial & Systems Engineers, South Jersey Delaware Valley Chapter*

*Institute of Transportation Engineers, Mid-Atlantic Section*

*Intelligent Transportation Society of Pennsylvania*

*International Code Council, Liberty Chapter*

*Jennifer Wetzel*

*Ken Golkin, PMP*

*KMJ Consulting, Inc.*

*Mary and Jim Moyer*

*Nancy Hall*

*National Association of Women in Construction*

*National Council of Examiners for Engineering and Surveying*

*P. Agnes, Inc.*

*Pennsylvania Society of Professional Engineers, Delaware County Chapter*

*Sally and John Kampmeyer*

*Society of Fire Protection Engineers, Philadelphia-Delaware Valley Chapter*

*Stantec Consulting Services, Inc.*

*Thomas and Julie Gennaro*

## **Friends**

*P2 Structural Engineering*



**JENNIFER WETZEL**

"I love Future City. It makes my brain sweat!"  
- Future City Student Participant

**Welcome to Future City Philadelphia!**

The Steering Committee and I are excited to have you join us at our regional competition.

Our student teams have spent the past few months imagining, researching, designing, and building their cities of the future. Today is when all their hard work pays off! We are thrilled that the program continues to grow with over 1000 students at 48 schools involved this year.

Thanks to all of our sponsors and especially our partners at Archbishop Carroll High School for making this event a success. We welcome you to be a part of another great competition.

**Follow @FC\_Philly**



#FutureCityPhilly



## 2018 FUTURE CITY COMPETITION PHILADELPHIA REGION

### SCHEDULE OF EVENTS

**8:00 – 8:45 AM**

Team Registration and Model Set-up

**8:45 AM**

Opening Announcement

**9:00 – 12:00 Noon**

Preliminary Judging

**9:00 – 12:00 Noon**

Special Awards Judging

**12:00 – 1:15 PM**

Lunch

**1:15 PM**

Announcement of Finalists

**1:30 – 3:30 PM**

Final Judging: Oral Presentations,  
Questions from Judges

**3:30 – 4:30 PM**

Awards Ceremony and  
Announcement of Regional Winning  
Teams

**Also, Thanks to our in-kind donations:**

Campbell Soup Co. - Juice

Urban Engineers, Inc. - Program Design

Herr's - Snacks

Bentley Systems - Student Giveaways

Wawa - Ice Tea, Lemonade, and Fruit Punch

Tasty Baking Co. - Tastykakes



# FINAL JUDGES

## **Deborah L. Grubbe, PE, CEng, NAC**

*Owner*

*Operations and Safety Solutions LLC*

Deborah Grubbe is the owner of an engineering consulting company, after executive positions with DuPont and BP. Deborah has been a member of the NASA Aerospace Safety Advisory Panel, and consulted in safety culture with the Columbia Shuttle Accident Investigation Board. She currently serves on the Engineering Advisory Councils at Purdue and Rowan Universities, and on the Chemical Engineering Advisory Board at Drexel. Deborah obtained a BS in Chemical Engineering from Purdue University and attended the University of Cambridge, England, on a Winston Churchill Fellowship. She is a registered Professional Engineer in Delaware, a chartered engineer in the United Kingdom, and is a Fellow of both the American and English Chemical Engineering Societies. In 2002 she was named the Engineer of the Year in Delaware, and this year she has been named the Delaware Valley Engineer of the Year.

## **Lydia Hernández Vélez**

*Deputy Managing Director for Aging*

*City of Philadelphia*

Ms. Hernández Vélez was appointed Deputy Managing Director for Aging in November of 2010. She previously served as Executive Director of the Eastern Pennsylvania Chapter of the Leukemia Lymphoma Society and Deputy Secretary of Banking for the Commonwealth of Pennsylvania. She attended Barnard College of Columbia University and Hofstra University School of Law. Born in New York, Ms. Hernández Vélez attended public schools and graduated from William Howard Taft High School in the Bronx, NY. She was active in her high school Aspira club then served on the Board of Directors of Aspira, Inc. of Pennsylvania for 29 years, more than twenty of those years as Chairperson during which Aspira grew to operate two charter schools and a large leadership development program in 18 local high and middle schools. She is married to the Honorable Angel L. Ortiz and is mom to Angel Omar Ortiz Hernández and Lydia Pilar Ortiz Hernández and step-mom to Ana Ortiz.

## **Barry Seymour**

*Executive Director*

*Delaware Valley Regional Planning Commission*

Barry Seymour is the Executive Director of the Delaware Valley Regional Planning Commission (DVRPC), the regional planning forum for the Greater Philadelphia region, with a focus on transportation, land use, the environment and economic growth. As both staff director and liaison to the DVRPC Board, Mr. Seymour has the primary responsibility to craft a regional agenda and an annual work program. DVRPC's long-range plan and short-term Transportation Improvement Program allocates over \$1 billion annually for transportation improvements across the region.. He is a recipient of the 2008 Pennsylvania Governor's Award for Local Government Excellence. Mr. Seymour is active on a wide variety of public and civic endeavors in the Philadelphia region and nationally, including several national committees for the Transportation Research Board of the National Academies of Science. He has a Bachelor of Science degree from Tufts University and a Master of Regional Planning degree from the University of North Carolina at Chapel Hill.

## **Nicole Stephano**

*Senior Director, Product Marketing, Project Delivery*

*Bentley Systems, Inc.*

Nicole Stephano is the Senior Director, Product Marketing for Bentley Systems, the global leader in architectural, engineering and construction (AEC) software solutions for sustaining infrastructure. In this role, Stephano is responsible for the worldwide marketing of Bentley's Project Delivery solutions, which includes ProjectWise all industries and markets. Nicole comes to Bentley Systems as an experienced Product Strategy with over 20 years of experience with major AEC software providers. With a passion and drive for customer success, Nicole works closely with industry leader, design and engineering professionals and Bentley's users to ensure the products and services are applied successfully and support strategic business outcomes. As an engaging, enthusiastic product professional Nicole has presented around the globe.

# SCHOOL LIST



SCHOOL	STUDENTS	MENTOR	CITY NAME
<b>Beverly Hills Middle School</b> Upper Darby, PA Christopher Phillips	Iftikar Farhan Mahir Tajwar Antonio Wong Nahid Hassan	Thomas Mitchell, PE Urban Engineers	Cosmic Creek
<b>Blair Christian Academy</b> Philadelphia, PA Willette Whitaker	Loren Fleming Deion McIntosh Trinity Robinson Davon Evans	Derrick Whitaker, PE Burns Engineering	Domani E Ora
<b>Cinnaminson Middle School</b> Cinnaminson, NJ Garwood Bacon	Abigail Dlug Gina Hite Claudia Masciantonio	Orla Pease AECOM	Segalia
<b>Collingswood Middle School</b> Collingswood, NJ Carol Johnson	Jacob Burkett Chloe Rogowski Mya Wilson Peyton Powers	Douglas Robbins	Hans

<b>SCHOOL</b>	<b>STUDENTS</b>	<b>MENTOR</b>	<b>CITY NAME</b>
<b>Downingtown Middle School</b> Downingtown, PA Derek Mastrangelo	Curtis Hankins Reagan Hardin Gabrielle Robino Mara Grigore	Tom Chmielenski Bentley Systems	Evimeria
<b>Drexel Hill Middle School</b> Drexel Hill, PA Harry Crossgove	Anna Fattizzo Emma Gray Renee Purnell Niaomi Combs	William Waldron AT&T	Karalee City
<b>East Norriton Middle School</b> Norristown, PA Victoria Strickland	Jacey Captis Meleena Guidici Trenden McClellan Daniella Slusher	Jennifer Warren, PE Lagan	Nova Terra
<b>Eisenhower Science Technology Leadership Academy</b> Norristown, PA Damon McNeil	Felix Carmona Jessica Hale Michael Killen Crintas Orlando Wright-Burruss	Justin Hale PECO Suhail Hassan CVM Professional	Red Sands
<b>G.A. Stetson Middle School</b> West Chester, PA David Kelly	Davis Patel Jhansiddth Setachayanon Sehaj Kaur Grace Zangwell	Anthony Zeloye, PE Jacobs	Viturborg
<b>Great Valley Middle School</b> Malvern, PA Kelly Eidell Heather McGovern	Charlotte Berger Katy Feddish Keegan Stewart Sapna Chokshi	Flavio deRezende, PE	Kasikadessa
<b>Grey Nun Academy</b> Yardley, PA KimberlyFranzon	Hope Aita Kevin Greed Molly McAtee Christopher Cromarty	Michael McAtee, PE Urban Engineers	Eirini
<b>Hedgepeth Williams Middle School</b> Trenton, NJ Bruce Williams	Michael Allen Lilliana Hayles Nasira Porter		Genesis II
<b>Hill Top Preparatory School</b> Rosemont, PA Adrienne Stretch	Benjamin Barretta Michael Freda Matthew Lambright Steven Demou	Fredrick Schindler	Port Aldburg
<b>Independence Charter School</b> Philadelphia, PA Gregory Schanne	Sydney Devine Lily Grace Oscar Ladino-Leon Marcus Diemer		Emanon
<b>J.R. Fugett Middle School</b> West Chester, PA Todd Saundurs	Liam Holman David Lane Benjamin Mercer Brian Pimley	Bill Nesti	Cougar City

<b>SCHOOL</b>	<b>STUDENTS</b>	<b>MENTOR</b>	<b>CITY NAME</b>
<b>Keith Valley Middle School</b> Horsham, PA Lisanne Liney	Martina Kernosh Hannah Parker Viviana Vergara-Anglim Charlotte Leibfried		Canlanma City
<b>Lionville Middle School</b> Exton, PA Guy Raines	Brendan Flynn Troy Ramiscal Aparna Vagvala Sydney Schweiger	Daisy Adams Bentley Systems	Alencia
<b>Mother Teresa Regional Catholic</b> King of Prussia, PA Sabrina Dwinnell	Kara Krouse Joshua Lloyd Evelyn Strong Katie George		Republic of Klienix
<b>Mount Aviat Academy</b> Childs, MD Terri Hanby	Erin Donohue Sebastian Hartman Lily Landis Danielle Triola	Jeffery Landis Maryland Environmental Service	Bella Cascata
<b>Murray Avenue School</b> Huntingdon Valley, PA Denise Meyers	Francesca Bovasso Gopiga Dass David Volchonok Anna Akhvenainen	Greg Jakubowski Fire Planning Associates, Inc.	At Klubith
<b>Paxon Hollow Middle School</b> Broomall, PA Christina Rainville	Mia Horwath Colby Laidieson Sophia Medori Emma Regan	Amanda Lafty Delaware County Planning Department	New Delphia
<b>Peirce Middle School</b> West Chester, PA Beth Walton Valitski	Nico Cloarec Xander Simmons Avery Wood Lauren Zisk	Michael Kissinger, PE Pennonni Associates	Aqurbem
<b>Penn Wood Middle School</b> Darby, PA Susan Chan-Peter	Shilah Jenkins Abigail Obeng Sukai Thomas-Holmes Kayla Kelly		Technopolis
<b>Pottsgrove Middle School</b> Pottstown, PA Debra Frasca	Angelina Hollinger Theo Hnat Nathan Strichik Steven McPhillimey	Chad Camburn, PE Bursich Associates, Inc.	Nika
<b>Queen of Angels Regional Catholic</b> Willow Grove, PA Diane Hediger	Mary Kate Feilke Aisleigh Hopkins Eric Krause Kylie McHugh	Julie Gennero	Taiohi
<b>Radnor Middle School</b> Radnor, PA Darcy Schneider Stephen Smolen	Justin Nourian Shalini Prasath Shreya Rupesh Zoriana Witmer	Tucker Faherty Bergmann PC	Kula
<b>Resurrection Catholic School</b> Cherry Hill, NJ Beth Rebbecchi	Isabella Dain Josie Gizinski Jack Tartamosa Annie Long	Phillip King, PE Urban Engineers, Inc. Laurel Welch, EIT Urban Engineers, Inc. Sylvia Scheurman, PE Urban Engineers, Inc.	Charleston

<b>SCHOOL</b>	<b>STUDENTS</b>	<b>MENTOR</b>	<b>CITY NAME</b>
<b>Ridley Middle School</b> Ridley Park, PA Dennis Bakey	Matthew Muller Jaela Nguyen Meadow Pitner Christopher Nesbitt	Mike Cerbus	Ridley Park Middle School
<b>Sacred Heart School</b> Havertown, PA Celie Magee	Patrick Donaher Abby Gondek Ava Jones Bridget Murphy	Kyle Fink, EIT Kelly & Close Consulting Engineers & Surveyors	Zukunft
<b>Southern Lehigh Middle School</b> Center Valley, PA Susan MacIntyre	John Behrens Sam Bull Alex Kane Christian Myung	Stepher Behrens Hannah Kushner Lehigh University	Castellum Eternum
<b>St. Albert the Great School</b> Huntington Valley, PA John Schrenk	Quincy Kilbride Juliana Stein Jacob Stevens Thomas McGauley		Consencia
<b>St. Aloysius Academy</b> Bryn Mawr, PA Amy Cahir Julianne Long	Joe Koslosky Colin Mayerhofer Charlie Phelan Ryan Mayerhofer	James Cahir, PE	Serenum City
<b>St. Andrew School</b> Drexel Hill, PA Amanda Hughes Dina Connors	Sadie Boyle Jessica Brophy Giorgios Karasavas Makayla McBurnie	Kris Kearns, PE Ewing Cole Jeffrey Roken, PE Urban Engineers	Ashland
<b>St. Elizabeth Parish School</b> Uwchlan, PA William Kuhn	Diana Bobko Allison Csernek Thanh-Lan Dinh Morgan Kalmback		New Dublin
<b>St. Helena School</b> Blue Bell, PA Karen Holder	Andrew Lynch Dominic Perri Matthew Shields P.J. Alessandrini	Paul Laub	Persici
<b>St. Ignatius of Antioch Catholic School</b> Yardley, PA Mary Casey Shirley Booz	Stephen Cain Michael Carroll Lily Eliason Sophia DeJesus	Mia Bonds	Nui
<b>Stewart Middle School</b> Norristown, PA Damon McNeil	Ciani Johnston Zachary Schuman Ceiani Thomas Alicia Skipwith	William Randolph	North Wakea
<b>Stratford Friends School</b> Newtown Square, PA Shelley Mansky	Guy Bayan Victoria Clark Griffin Reichow Liam Norton	Ed Barnhart, AIA Always By Design, Archicture Lunal Khuon Drexel University	Volcan Futuro
<b>Thomas Holme Elementary School</b> Philadelphia, PA Lori Abernethy	Daisy Chen Benjamin Davis An Hoang Ashiya Bertrand	Matt Sherwood Louis Rodriguez Consulting	Den City

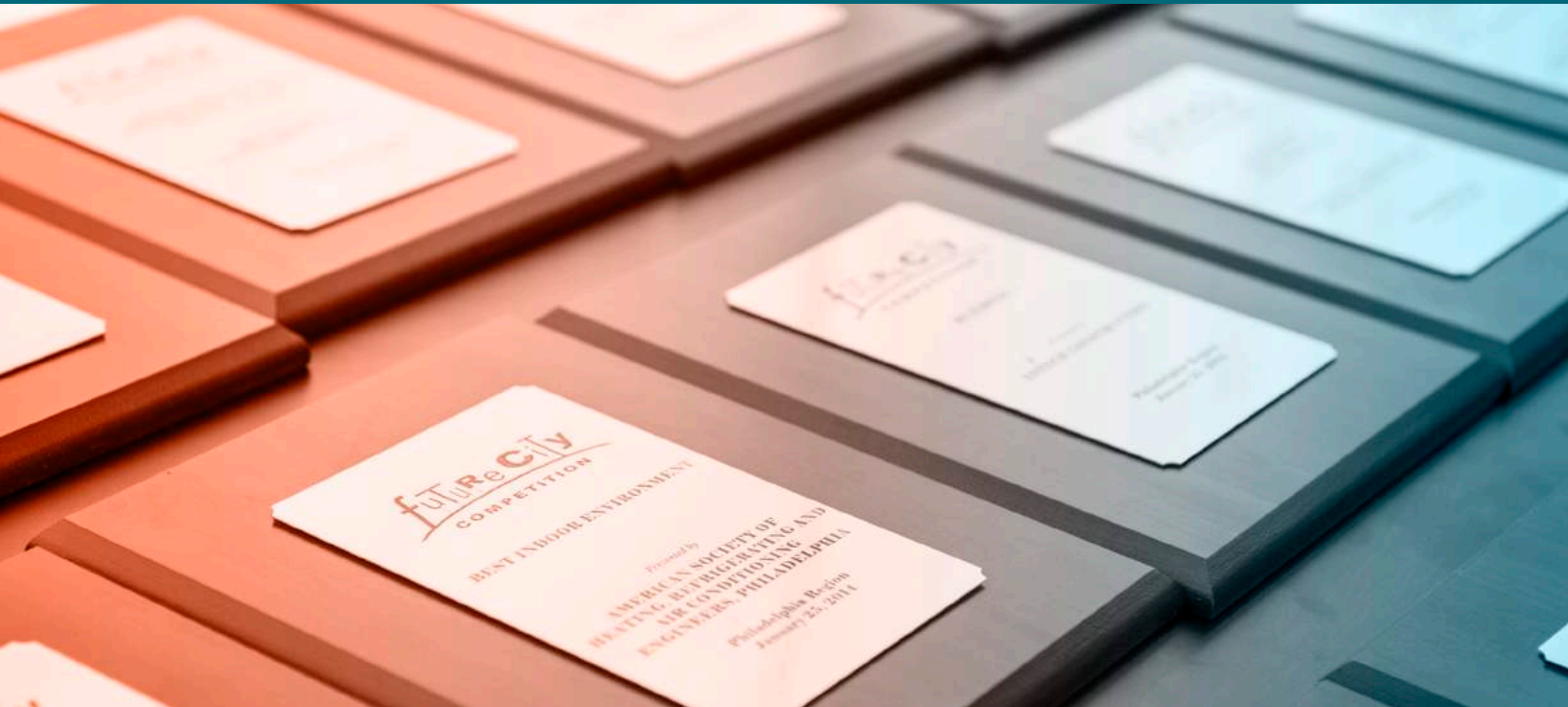


# SCHOOL TABLE ASSIGNMENTS

1. Beverly Hills Middle School
2. Blair Christian Academy
3. Cinnaminson Middle School
4. Collingswood Middle School
5. Downingtown Middle School
6. Drexel Hill Middle School
7. East Norriton Middle School
8. Eisenhower Science and Technology Leadership Academy
9. G. A. Stetson Middle School
10. Great Valley Middle School
11. Grey Nun Academy
12. Hedgepeth Williams Middle School
13. Hill Top Preparatory School
14. Independence Charter School
15. J.R. Fugett Middle School
16. Keith Valley Middle School
17. Lionville Middle School
18. Mother Teresa Regional Catholic
19. Mount Aviat Academy
20. Murray Avenue School
21. Paxon Hollow Middle School
22. Peirce Middle School
23. Penn Wood Middle School
24. Pottsgrove Middle School
25. Queen of Angels Regional Catholic School
26. Radnor Middle School
27. Resurrection Catholic School
28. Ridley Middle School
29. Sacred Heart School
30. Southern Lehigh Middle School
31. St. Albert the Great School
32. St. Aloysius Academy
33. St. Andrew School
34. St. Elizabeth Parish School
35. St. Helena School
36. St. Ignatius of Antioch Catholic School
37. Stewart Middle School
38. Stratford Friends School
39. Thomas Holme Elementary School



# SPECIAL AWARDS



## SPONSOR

## AWARD

Bentley Systems, Inc	Best Use of Technology
Pennoni Associates	Innovative Environmental Management
Urban Engineers, Inc.	Best Transit Design
AECOM	Best Transportation Planning
BR+A Consulting Engineers	Future STEM (Science, Technology, Engineering, and Mathematics)
CVM Professional	Preserving our Past - Envisioning our Future
Delaware Valley Regional Planning Commission	Regional Vision
Hunter Roberts Construction Group, LLC	Most Creative Model Material
International Society of Pharmaceutical Engineers, Delaware Valley Chapter	Innovation in Healthcare
Jacobs	Safety in Transportation
Keast & Hood Structural Engineers	Best Use of Structural Engineering Concepts
Langan Engineering & Environmental Services	Innovation in Sustainable Engineering
Skanska USA Inc	Innovative Construction Design
Society of American Military Engineers, Philadelphia Post	Creative Application of Civil Works
The Kirkman Oliver Company	Innovation in Workplace Design
Trefz Engineering	Innovation
American Society of Heating, Refrigerating and Air Conditioning Engineers, Philadelphia Chapter	Best Indoor Environment
American Society of Mechanical Engineers, Philadelphia Section	Best Moving Part
American Society of Plumbing Engineers, Philadelphia Chapter	Plumbing Technology
Arora Engineers, Inc.	Rethinking Infrastructure for the Age-Friendly City
Associated Engineering Consultants, Inc.	Best Thinking Outside the Box
Association of Energy Engineers, Greater Philadelphia Chapter	Best Energy-Based Project
Ballinger	Walter Ballinger Hope for the Future
Boles, Smyth Associates, Inc.	Sustainability of Transportation Systems
International Society of Automation, Philadelphia Section	Sam Herb / Jack McGrath ISA Automation

James J. Anderson Construction Co., Inc.	Best Waterfront Concept
Johnson Controls, Inc.	Building Technology
L.F. Driscoll Company, LLC	Pride in Quality
National Fire Sprinkler Association, PennJerDel Chapter	Fire Sprinkler Water Delivery
Target Building Construction	Construction Management
American Planning Association, PA Chapter, Southeast Section	Planning Excellence
American Society of Civil Engineers, Phila Section, Young Members Forum	Dream Big
American Society of Highway Engineers, Delaware Valley Section	Infrastructure
American Society of Highway Engineers, Southern New Jersey Section	Innovative Application of Highway Design
Canuso Jordan	Passion & Enthusiasm
Institute of Electrical and Electronic Engineers, Philadelphia Section	IEEE Philadelphia Section
Institute of Industrial & Systems Engineers, South Jersey Delaware Valley Chapter	P. Robert Siebeneicher, II - Industrial Engineering
Institute of Transportation Engineers, Mid-Atlantic Section	Most Innovative Transportation Concept
Intelligent Transportation Society of Pennsylvania	Best Use of Technology in Transportation
International Code Council, Liberty Chapter	Building Safety
Jennifer Wetzel	Outstanding First Year Team
Ken Golkin, PMP	First Winners
KMJ Consulting, Inc.	Best Pedestrian Plan
Mary and Jim Moyer	Best Essay
Nancy Hall	James G. Hall, PE Memorial
National Association of Women in Construction	Family Friendly Neighborhoods
National Council of Examiners for Engineering and Surveying	Best Land Surveying Practices
P. Agnes, Inc.	Constructing for the Future
Pennsylvania Society of Professional Engineers, Delaware County Chapter	Best Coordination of Engineering Disciplines
Sally and John Kampmeyer	Attention to Engineering Education
Society of Fire Protection Engineers, Philadelphia-Delaware Valley Chapter	Fire Protection Engineering
Stantec Consulting Services, Inc.	Stantec Consulting
Thomas and Julie Gennaro	Technics and Civilization



# THANKS TO ALL OUR VOLUNTEERS!



## FINAL JUDGES

Barry Seymour / DVRPC  
Deborah L. Grubbe, PE, CEng, NAC / Operations and Safety Solutions LLC  
Lydia Hernández Vélez / City of Philadelphia  
Nicole Stephano / Bentley Systems, Inc.

## VIRTUAL CITY JUDGES

Arthur Simpson, II / Arora Engineers, Inc.  
Anita Ting / AECOM  
Cameron Dalton / AECOM Tishman  
Donna Guzewski / ARORA  
Gina Mazzulla / Bentley Systems  
Isaac Kessler / Remington & Vernick Engineers  
Michael Mayor, PE  
Olivia Williams / AECOM

## ESSAY JUDGES

Barbara Reisenwitz / Bentley Systems  
Ceil Mancini / AECOM  
Gailynne Ferguson / CVM  
Heather Brewster / AECOM  
Scott Lowe / Trauner Consulting Services, Inc.  
Shoshana Akins / DVRPC

## MODEL AND PRESENTATION JUDGES

Allan Stock / Arora Engineers  
Allison Calder / Oliver Fire Protection & Security  
Antonia Iaconelli  
Carlos Sierra Silva  
Catherine Federico / AECOM  
Christine Larsen / Ballinger  
Dennis Gross / Pennsylvania Drug Discovery Institute  
Dilip Radadia / Jacobs Engineering Group  
Eammon Farley / Michael Baker International  
Erin Coombs / Jacobs

Fran Talarowski / Springfield High School  
George Gaynor / Philadelphia Energy Solutions  
Greg Krykewycz / DVRPC  
Heather Brewster / AECOM  
Isaac Kessler / Remington & Vernick Engineers  
John McGowan, PE / Lockheed Martin  
Joseph Palombit / Penn Medicine  
Justin Irick / Suez Water  
Karin Morris / Delaware Valley Regional Planning Commission  
Kenneth Goldberg / US Army Corps of Engineers - Philadelphia  
Kim Dengler  
Liz Trumbull / University of Pennsylvania  
Maggie Chase / CH2M/Jacobs  
Monica Bersani / Philadelphia Gas Works  
Murray Rosenberg / Jacobs Engineering  
Nick Kirn / AECOM  
Nick Martin  
Peter Paton / P2 Structural Engineering, LLC  
Roman Ventura / Heraeus Precious Metals North America  
Ross Robertson / Jacobs  
Sidney New / Gannett Fleming  
Steven Goodsell / HDR Engineering  
Suzann Collins / CH2M/Jacobs  
Suzette Schultz / AstraZeneca Pharmaceuticals  
Ted Elicker / First Capital Design Group LLC

## TEAM ASSISTANT

Jim Moyer

## SCOREKEEPER

Kurt Leininger / ATC Group Services

## SPECIAL AWARD EVALUATORS

Chris Bratz / Ballinger

Maggie Carroll / Ausley Associates

Liz Carroll

Justin Cusick / Esri

Rachel DePan / Jacobs Engineering

Mary Anne Devine / JAOMAD Consultancy

Amanda Embry / Bentley Systems

Spencer Finch / Langan Engineering

Mark Giovagnoli / BR+A Consulting Engineers

Philip Gonski / Burns Engineering

Charles Grab / Rockwell Automation

Jeff Guzy / RK&K

Aaron Harrington / Ballinger

Samuel Herb, P.E. / JAOMAD Consultancy

John Hilditch / Exelon Corporation

Vince Krakauskas / City of Philadelphia

Robert Miller

Bob Murray / CHOP

Jeff Obrecht / RK&K

Mike Panco

Linda Peduto / Bentley Systems

Susan Phillips, PE / KMJ Consulting Inc.

Danielle Rebori / JWA

Amber Reimnitz / Pennsylvania Turnpike Commission

Alicia Rinkus

Chris Rood / AECOM

Ryan Rose / St. Joseph's University

Megan Rosica / Jacobs Engineering

Yashar Shirazi Nia / AECOM

David Smith

Matthew Snyder / CRB

Rob Spitz / H&H Systems

Frank Spitz

Jessica Tarica

Andrew Thompson / Urban Engineers, Inc.

Robert Wexler, LEED AP / Liberty Chapter of Philadelphia

Karen Whitaker

Frederick Willis

## GENERAL VOLUNTEERS

Al Beatty / Delaware Valley Regional Planning Commission

Chris Kaelin / Urban Engineers, Inc.

## PROGRAM DESIGN

Charlotte Hinton / Urban Engineers, Inc.

Luke Cloran / Urban Engineers, Inc.

## PHOTOGRAPHERS

Julia McAtee / Nazareth Academy





# THANKS TO THE FUTURE CITY STEERING COMMITTEE

## **REGIONAL COORDINATOR**

Jennifer Wetzel

## **SCHOOL COORDINATOR**

Mary Moyer

## **VOLUNTEER COORDINATOR**

Karen McManuels

## **SPONSORSHIP COORDINATORS**

John Kampmeyer

Susan Best

Ken Golkin

Jim Cokonis

## **TREASURER**

Helen Eck

## **JUDGING COORDINATOR**

Susan Best

## **MENTOR COORDINATOR**

Michael McAtee

## **VIRTUAL CITY JUDGING COORDINATOR**

Sara Irick

## **PRELIMINARY JUDGING COORDINATOR**

Edwina Lam

## **WEBSITE**

Max Long

## **SITE LOGISTICS**

Kathy DeJohn

Kyle Fink

## **PROVISIONS PLANNER**

Jim Brady

## **SPECIAL AWARDS COORDINATOR**

Ken Golkin

## **SOCIAL MEDIA COORDINATOR**

Bill Waldron

## **COMPETITION DAY SIGNAGE/WAYFINDING**

Tony Pincherri

## **PROGRAM COORDINATORS**

Michael McAtee

Charlotte Hinton

## **SCORING ROOM COORDINATOR**

Jim Brady

## **SECRETARY**

Sid New

## **PUBLIC RELATIONS COORDINATOR**

Karen Whitaker

## **COMPETITION DAY MATERIALS / AWARD COORDINATOR**

Helen Silvis

## **FINALS JUDGING COORDINATOR**

Sara Irick

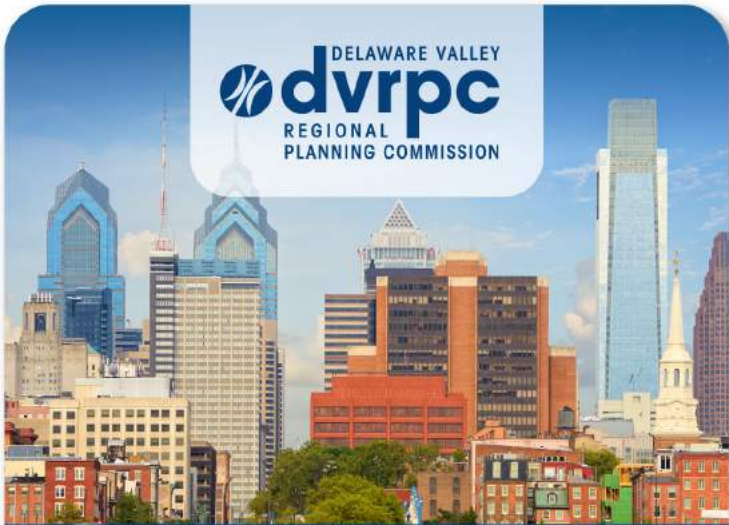


Proud to Sponsor the Philadelphia  
 Regional Future City Competition



SUCCESSFULLY BUILDING SINCE 1990

Pre-Construction  
 General Construction  
 Construction Management  
 Design Assist



DELAWARE VALLEY  
**dvrpc**  
 REGIONAL  
 PLANNING COMMISSION

*Connecting People,  
 Places & Prosperity  
 in Greater Philadelphia*

CONNECT WITH US  
[www.dvrpc.org](http://www.dvrpc.org)



ENHANCING HOW PEOPLE

**Live. Work. Play.**

- Program Management
- Construction Services
- Urban Video Productions
- Urban Training Institute
- Environmental
- Planning
- Design



[urbanengineers.com](http://urbanengineers.com)

215.922.8080  
 Philadelphia, PA



ENGINEERS, SCIENTISTS, SURVEYORS, & PLANNERS  
[www.pennonni.com](http://www.pennonni.com)

We work hard to ensure our project choices  
and designs prioritize smart technology  
and pave the way for a brighter future.

PARTNERS FOR WHAT'S POSSIBLE



BR+A Consulting Engineers  
is proud to support the

## Future City Competition

and its dedication to enriching  
young minds with the power of  
STEM education.

[brplusa.com](http://brplusa.com)



cvm

engineering gives your future a lift  
[cvmprofessional.com](http://cvmprofessional.com)

LANGAN



# Proud to Sponsor the Philadelphia Regional Future City Competition

Technical Excellence | Practical Experience | Client Responsiveness



**PENJERDEL CHAPTER**



*JAMES J. ANDERSON  
CONSTRUCTION COMPANY, INC.*

6958 Torresdale Avenue, Suite 200  
Philadelphia, PA 19135  
215-331-7150



**Philadelphia PA  
Section**

## Proud to Support Philadelphia Future City Competition



Providing life sciences professionals with **knowledge, tools, and leadership** to support their career development

[ispe.org/delaware-valley-chapter](http://ispe.org/delaware-valley-chapter)



## Building What Matters



Whether it's connecting communities with new infrastructure, building corporate commercial environments where clients can thrive, or providing high-quality specialty, healthcare and education facilities, Skanska's broad expertise makes us the full-service construction partner of choice for Philadelphia.

Skanska is proud to sponsor the Philadelphia Region's 23rd year of participation in the Future City Competition.

# SKANSKA

**JACOBS**

Developing Future Leaders to  
Build a Better Community for All

City of Philadelphia  
Schuylkill River Banks Boardwalk



City of Philadelphia  
Schuylkill River Parks  
Connector Bridge



City of Philadelphia  
Traffic Operations Center



PennDOT 6-0 I-76  
Integrated Corridor  
Management



[www.jacobs.com](http://www.jacobs.com)

*aec*

Associated Engineering Consultants Incorporated

485 Devon Park Drive Suite 113 Wayne Pennsylvania 19087  
tel 610 688 3980 x132 fax 610 688 4566

Civil | Structural | HVAC | Plumbing | Electrical | Fire Protection

**KH KEAST & HOOD**  
STRUCTURAL ENGINEERS

We are proud to support the  
Future City Competition.  
Best wishes to all participants!

[www.keasthood.com](http://www.keasthood.com)

New Construction • Renovation • Additions • Adaptive Reuse • Historic  
Preservation • Façades • Masonry Stabilization • Structural Intervention

ASME

Philadelphia Section  
Promoting Engineering In Our Region

- Funding K-12 activities such as Future City Philly
- Supporting student projects at area universities
- Providing technical and social meetings for members
- Promoting mechanical engineering achievements

**CASPE**  
American Society of  
Plumbing Engineers™

**PHILADELPHIA**

[www.aspephila.org](http://www.aspephila.org)



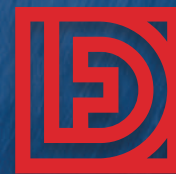
**AEE**

Association of Energy Engineers

Greater Philadelphia Chapter

[www.gpaee.org](http://www.gpaee.org)

**Congratulations to all the teams  
on your amazing work!**



**L.F. Driscoll**

Construction Managers, Builders

L.F. Driscoll Co., LLC is an EEO / AA employer, M/F/D/V

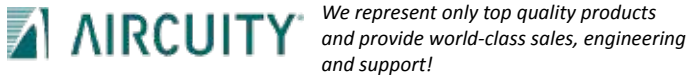


Representatives of  
Phoenix Controls Corporation,  
Strobic Tri-Stack Fans & Aircuity, Inc. serving the  
Eastern Pennsylvania, New Jersey  
& Delaware areas.

## The Kirkman Oliver Company



41 Harrison Drive Newtown Square, PA 19073



**Celebrating over 16 years in business!**

Telephone: 610-960-1075  
Fax: 610-964-1633  
Web: [www.tko-co.com](http://www.tko-co.com)



**Proud Silver Sponsors of the 2017  
Future City Competition!**



## Imagine it. Delivered.

AECOM is proud to be a Silver Sponsor of  
the 2018 Future City Competition,  
Philadelphia region.

[aecom.com](http://aecom.com)

Hunter Roberts Proudly Supports the  
Mission of the Future City® Program

**Congratulations to All the Competitors!**



**We care.  
We listen.  
We communicate.  
we deliver.**

1717 Arch Street, 34th Floor  
Philadelphia, PA 19103  
T: 215.832.4300

[hrcg.com](http://hrcg.com)



BALLINGER IS PROUD TO SUPPORT  
FUTURE CITY PHILADELPHIA



BALLINGER

933 CHESTNUT ST, SUITE 1400  
PHILADELPHIA, PA 19107  
[BALLINGER.COM](http://BALLINGER.COM)

ARCHITECTURE  
ENGINEERING  
INTERIORS

Planning & Design  
Program & Construction Management  
Facilities Management  
Information Technology



Rethinking Infrastructure® | [aroraengineers.com](http://aroraengineers.com)

# Bentley is *Advancing* Infrastructure



Advancing infrastructure is now a world priority. We need high performance infrastructure that can meet the demands of a global population while preserving a vital and healthy environment for generations to come.

Bentley provides innovative software and services for the enterprises and professionals who design, build and operate the world's infrastructure — advancing the global economy and environment, for improved quality of life.



Find out more at: [www.bentley.com](http://www.bentley.com)

PHILADELPHIA REGIONAL

**FUTURE CITY**

C O M P E T I T I O N

JANUARY 20, 2018